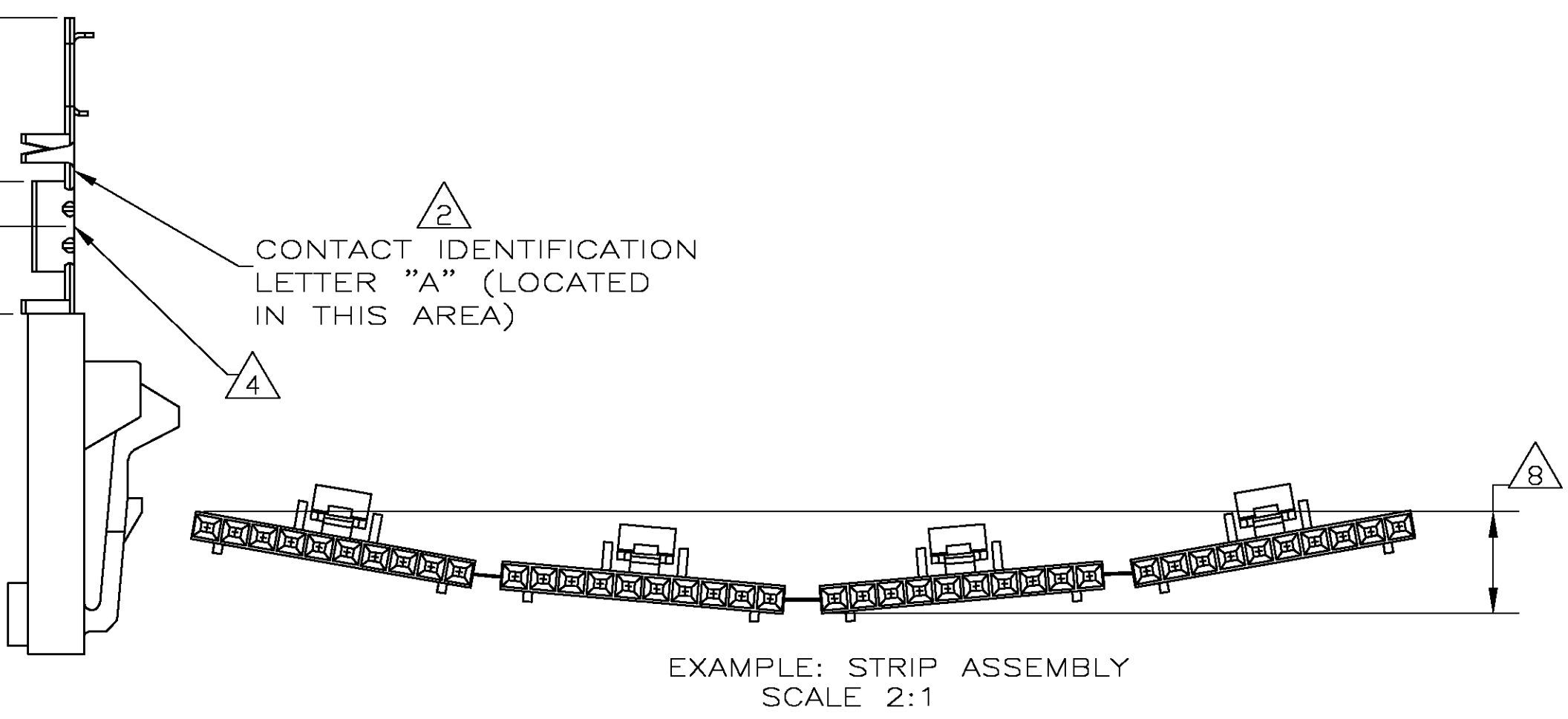
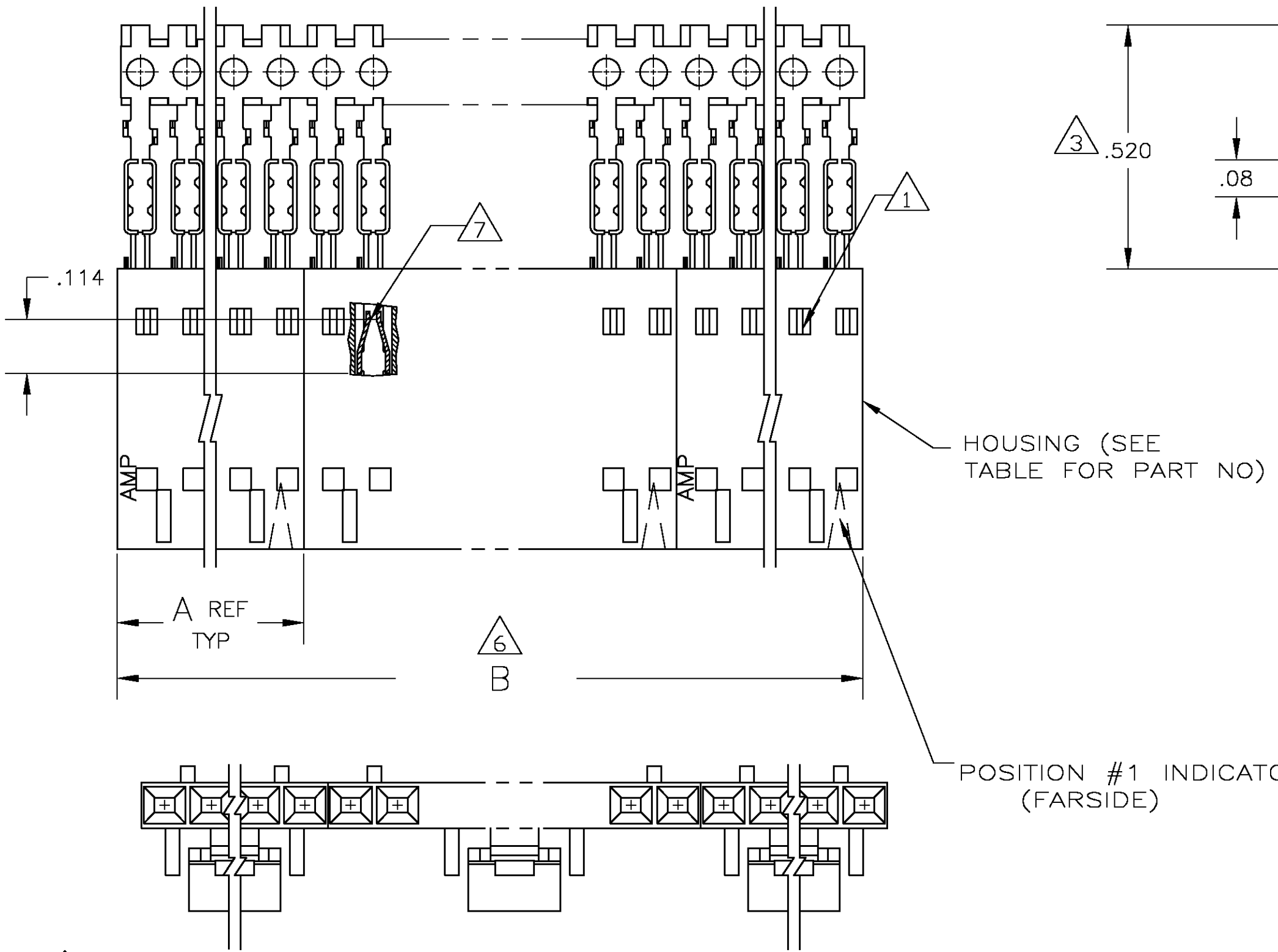


THIS DRAWING IS UNPUBLISHED. RELEASED FOR PUBLICATION
 © COPYRIGHT BY TYCO ELECTRONICS CORPORATION. ALL RIGHTS RESERVED.

LOC		DIST		REVISIONS			
AD	00	P	LTR	DESCRIPTION	DATE	DWN	APVD
		M		EC 0G3C 0734 04	18DEC04	BSV	JLG



12	2	2.40	1.198	1-104257-1	12	6-103959-1
12	2	2.20	1.098	1-104257-0	11	6-103959-0
12	2	2.00	.998	104257-9	10	5-103959-9
12	2	1.80	.898	104257-8	9	5-103959-8
12	2	1.60	.798	104257-7	8	5-103959-7
12	2	1.40	.698	104257-6	7	5-103959-6
12	4	2.39	.598	104257-5	6	5-103959-5
12	4	1.99	.498	104257-4	5	5-103959-4
12	5	1.99	.398	104257-3	4	5-103959-3
12	8	2.40	.298	104257-2	3	5-103959-2
12	10	2.00	.198	104257-1	2	5-103959-1
11	10	5	1.99	104257-3	4	1-103959-3
11	10	4	1.99	104257-4	5	1-103959-2
9	2	2.40	1.198	1-104257-1	12	1-103959-1
9	2	2.20	1.098	1-104257-0	11	1-103959-0
9	2	2.00	.998	104257-9	10	103959-9
9	2	1.80	.898	104257-8	9	103959-8
9	2	1.60	.798	104257-7	8	103959-7
9	2	1.40	.698	104257-6	7	103959-6
9	4	2.39	.598	104257-5	6	103959-5
9	4	1.99	.498	104257-4	5	103959-4
9	5	1.99	.398	104257-3	4	103959-3
9	8	2.40	.298	104257-2	3	103959-2
9	10	2.00	.198	104257-1	2	103959-1
PLATING	6	B	A	HOUSING PART NUMBER	NO OF POSN	ASSEMBLY PART NUMBER ON STRIP

- 1 CONTACTS ARE LATCHED INTO THE PRELOAD WINDOWS
- 2 USE WITH #26-#30 AWG WIRE SIZE, .054/.030 INSULATION DIAMETER, .015 MAXIMUM INSULATION THICKNESS
- 3 THE DIMENSION APPLIES WITH THE FORWARD PRELOAD STOP IN CONTACT WITH THE HOUSING SURFACE
- 4 POINT OF MEASUREMENT FOR PLATING THICKNESS
- 5 FOR INDIVIDUAL ASSEMBLIES SEE PART NUMBER 103641
- 6 ASSEMBLIES ARE JOINED BY THE CARRIER STRIP. ORDER QUANTITY REFLECTS TOTAL NUMBER OF INDIVIDUAL ASSEMBLIES REQUIRED. SEE TABLE FOR NUMBER OF ASSEMBLIES PER STRIP.
- 7 POINT OF MEASUREMENT FOR PLATING THICKNESS (INSIDE BEAMS)
- 8 MAXIMUM ALLOWABLE BOW OF ASSEMBLY NOT TO EXCEED .055.
- 9 .000100-.000200 BRIGHT TIN-LEAD OVER .000050 NICKEL.
- 10 .000100-.000200 BRIGHT TIN OVER .000050 NICKEL.
- 11 PRELIMINARY PART - NOT RELEASED FOR PRODUCTION.
- 12 .000100-.000200 MATTE TIN OVER .000050 NICKEL.

THIS DRAWING IS A CONTROLLED DOCUMENT.

DWN L A MAYER 11-4-86
 CHK P de Jong 11-12-86
 APVD P de Jong 11-12-86

TYCO Electronics Tyco Electronics Corporation
 Harrisburg, Pa 17105-3608

NAME RCPT ASSY, AMPMODU MTE, SINGLE
 ROW .100 C/L, LATCHED AND POLARIZED
 FOR #26-#30 AWG WIRE SIZE, STRIP FORM

PRODUCT SPEC 108-25034
 APPLICATION SPEC 114-25026

SIZE A2 CAGE CODE 00779 DRAWING NO C=103959 RESTRICTED TO -

MATERIAL HOUSING: SEE TABLE WEIGHT - SCALE 4:1 SHEET 1 OF 1 REV M

CUSTOMER DRAWING